

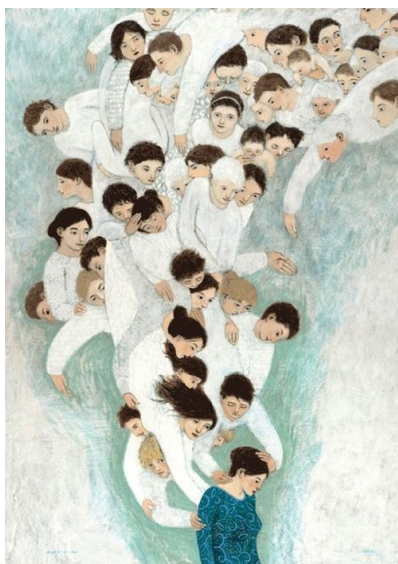
Svetovi: revija za etnologijo, antropologijo in folkloristiko /

Worlds: Journal for Ethnology, Anthropology and Folkloristics

Religion in Flux: Adaptation and Innovation

Call for papers for the 2024 issues

Submission deadline: January 31, 2024



She Will Find What Is Lost (Author: Brian Kershisnik, 2014)

The place of religion in social, economic, and political processes has been a vital theme in the social sciences. Religion remains one of the most important spheres of human life. The intensive attention to studying religious beliefs, practices, and rituals in ethnology and anthropology has led to the creation of important theories. Additionally, it has initiated numerous empirical studies which have profoundly affected the development of the disciplines.

The thematic issues 3 and 4 on religion aim to draw attention to various aspects of religious life, beliefs, rituals, spirituality, etc., in the past and contemporary societies. The guest editors invite analytical, theoretical, or synthetic articles, empirical research reports, essays, discussions, and book reviews focused mainly (however, not exclusively) on topics related to ritual, (space) identity, and healing practices. Apart from emphasising the basic orientations of the journal (ethnology, anthropology, folklore, etc.), we do not impose disciplinary, thematic, temporal, or spatial restrictions on the authors or content of articles. We find ethnographic experience, theory, comparability, interdisciplinarity, syntheticity and topicality most significant in writing and editing texts.

The thematic issue will be guest-edited by cultural anthropologists Michal Uhrin (Comenius University in Bratislava; michal.uhrin@uniba.sk) and Manca Račič (University of Ljubljana; racicevamanca@gmail.com). As for publishing in the journal's issues 3 and 4, you are kindly invited to send articles to svetovi-worlds@ff.uni-lj.si or to the editors by January 31, 2024. You can also upload the content directly to our [Worlds Open Journal System](#).